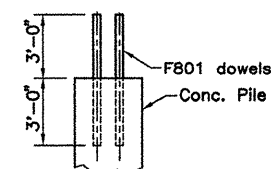
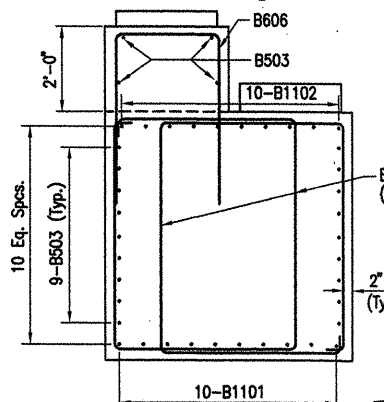
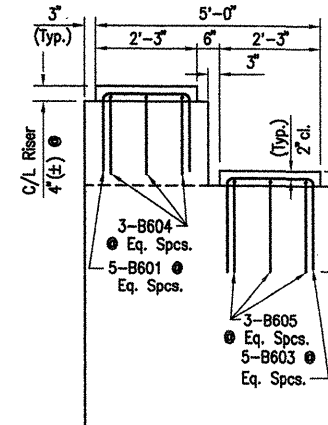


The riser reinforcing steel shall be placed with the bent cap reinforcing steel. The Contractor has the option to drill and grout the riser reinforcing steel at least 1'-6" into the cap using an approved non-shrink grout or an epoxy grout listed in the QPL. Diameter of holes and installation procedure shall be as recommended by the grout manufacturer. Place bent reinforcing properly to avoid damage. This work shall be paid under "Reinforcing Steel - Bridge".



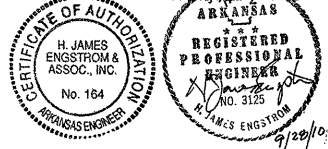
Drill and grout F801 dowels 3'-0" into piles using an approved non-shrink grout or an epoxy grout listed in the QPL. Diameter of holes and installation procedure shall be as recommended by the grout manufacturer.



FOOTING LOCATION SKETCH
Looking Upstation
N.T.S.

SECTION D-D

Scale: 1/4" = 1'-0"



Revised Plan Dimensions and Bar List by E/M+M, GPT 6-17-11

DATE REVISED	DATE FILMED	DATE REVISED	DATE FILMED	FED. ROAD NO.	STATE	FED. AID PROJ. NO.	SHEET NO.	TOTAL SHEETS
6-17-11					ARK.			
						110395	46	203
				06830	BENTS			47044

BAR LIST-PER BENT							Bending Diagrams	
Mark	No. Req'd	Length	'A'	'B'	P.D.		Dimensions are out to out of bars.	
B501	68	19'-2"	4'-2"	5'-2"	2 1/2"		A	A
B502	22	14'-3 1/2"	4'-2"	5'-2"	2 1/2"			
B503	22	41'-2"			Str.			
B601	20	5'-1"	1'-11"	1'-9"	4 1/2"			
B602	12	6'-6"	3'-4"	1'-9"	4 1/2"			
B603	25	5'-7"	1'-11"	2'-0"	4 1/2"			
B604	15	7'-8"	4'-0"	1'-9"	4 1/2"			
B605	12	6'-8 1/2"	3'-4 1/2"	1'-9"	4 1/2"			
B606	42	9'-8"	2'-2"	3'-9"	4 1/2"			
B1101	10	41'-2"			Str.			
B1102	10	44'-2"	41'-2"	12 1/2"	10"			
C601	1	2588'-10"						
C602	1	2631'-6"						
C603	4	16'-0"						
C901	29	56'-1"	54'-9"	1'-7"	9"			
C902	29	56'-11"	55'-7"	1'-7"	9"			
F801	88	6'-0"			Str.			
F1101	52	23'-6"	20'-6"	1'-0 1/2"	11"			
F1102	84	15'-6"	12'-6"	1'-0 1/2"	11"			
F1103	26	20'-6"			Str.			
F1104	42	12'-6"			Str.			

NOTES:

- All concrete shall be Class "S". All exposed corners to be chamfered 3/4" unless otherwise noted. All concrete shall be poured in the dry.
- All reinforcing steel shall conform to AASHTO M31 or M53, Gr.60.
- If anchor bolts are drilled into cap, top reinforcing bars shall be properly placed to avoid damage.
- For additional information, see Layout.
- Contractor has the option of placing a 6'-0" lap splice in the vertical leg of C901 & C902 bars. The splice shall be in the middle half of the column height. This shall be included in "Reinforcing Steel Bridge".

NOTES FOR SPIRAL REINFORCING

- Ends of spirals in footing and cap shall have 1 1/2 turns and terminate with a 135° hook and a 24" tail as shown in Bar List.
- Spiral reinforcement at splices in the length designated as permissible for lap splices shall be terminated by a 135° hook with a 10" tail hooked around a vertical bar.
- Spiral reinforcement shall be plain round or deformed steel bars meeting the requirements of AASHTO M31 or M53 (Grade 60) or shall be cold drawn wire meeting the requirements of AASHTO M32 or M225 (Grade 70) with a minimum diameter of 0.75".
- Spiral reinforcement shall be paid for at the contract unit price bid per pound for "Reinforcing Steel - Bridge (Grade 60)". No additional payment shall be made for spacers, splices or bracing needed for assembly, shipping, handling or erecting.
- Lapped splices in spirals shall be lapped 80 bar diameters minimum.
- Adjust spiral pitch as needed to accommodate footing or cap bars.

ALTERNATE NO. 1

DETAILS OF BENT - WHITE RIVER BENT 64

WHITE RIVER STR. & APPRS.
(CLARENDON) (PH III) (F)
MONROE COUNTY

ROUTE 79 SEC. 13

ARKANSAS STATE HIGHWAY COMMISSION
LITTLE ROCK, ARK.

Engstrom & Modjeski and Masters, Inc.

DRAWN BY: CJA/JDB DATE: Sep. 10 FILENAME: b1103951_b13
CHECKED BY: GPT DATE: Sep. 10 SCALE: 1/4" = 1'-0"
DESIGNED BY: JAM DATE: Sep. 10
BRIDGE NO. 06830 DRAWING NO. 47044